

## Defining billable tests and Service

Prices are defined by making an entry into the “fund assessments” table, so named because each item is credited to particular “fund”, for example Lab, Fields, Tags etc. Defining the service will not automatically cause them to be billed. There has to be a function in PH that uses that item and price.

There are three tables that define the prices for each assessment.

- Crop\_fees when the price varies by individual crops.

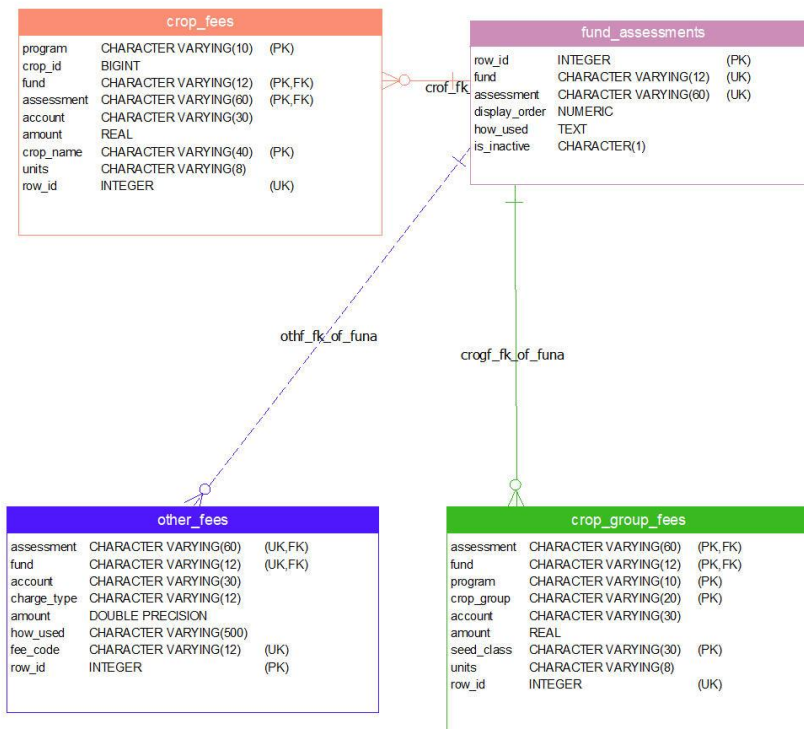
- Crop Group Fees when the price is the same within a set of crops

- Other Fees, when a price is the same across all crops or crop groups.

These tables provide a definition of the descriptions and fees to be used. The PH code that retrieves and uses this pricing information looks for specific names. The matching is case sensitive.

“Application Fee” will not match with “Application fee”

### Erbuilder diagram



## DBFORGE ( browse data)

